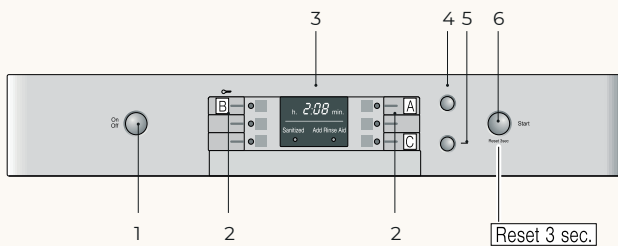


HOW TO USE DISHWASHER



SHEM3AY55N



1. ON/OFF Button
2. Wash cycles*
3. *Digital display
4. Delay start button
5. Wash cycle options*
6. *Start button

Rinse Aid

1. To achieve proper drying, always use a liquid rinse aid, even if your detergent contains a rinse aid or drying additive.

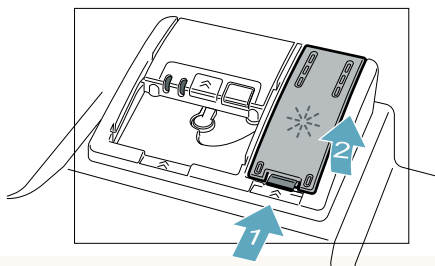
NOTE: The dishwasher indicates low rinse aid by turning on the Rinse Aid indicator. If this indicator lights up, you need to refill the rinse aid dispenser 1b by following the directions below.

Adding rinse aid

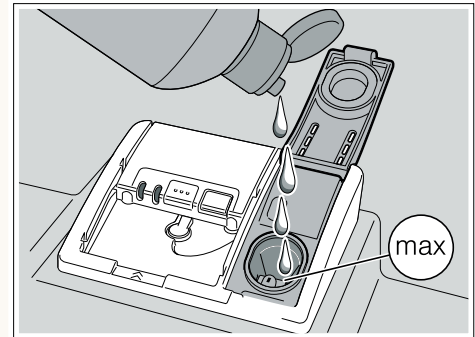
NOTICE

To avoid oversudsing or clogging, do not overfill the rinse aid dispenser 1b. Wipe up any spills with a damp cloth.

1. Open the rinse aid dispenser 1b by pressing on the latch of the lid and pull it open.



2. Add liquid rinse aid to the dispenser 1b until it is full. Do not overfill. Avoid spilling into air vent hole.



3. Close the lid. Lid must be fully closed until it clicks in order to seal.
4. Wipe up any excess rinse aid that may have puddled when the dispenser reservoir is full. The indicator light will go out a few moments after the dishwasher door is shut.

TIP:

For easier pouring, remove lid from the rinse aid bottle.

